



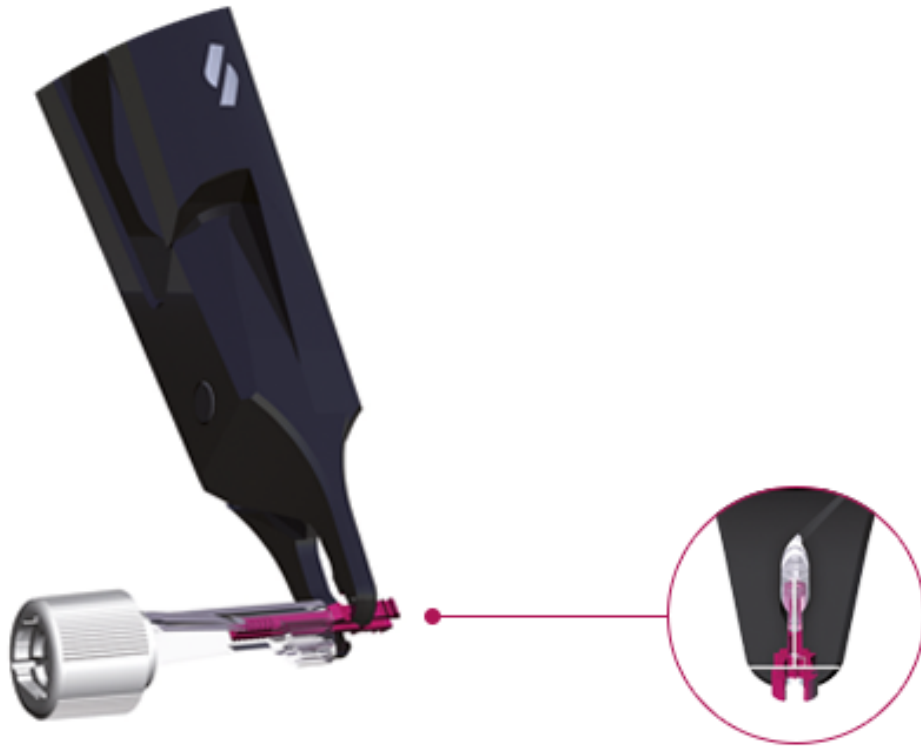
Hammertoe correction

PIP & DIP intramedullary implants

The Lync implant is specifically designed for distal & proximal interphalangeal arthrodesis hammer toe deformity correction. Its low-profile configuration ensures implant stability by reducing the risks of rotation and pullout. Its expansion capacity and the notched grooves allow effective intraoperative anchorage to prevent migration.



Features & benefits



Lync solutions

-

Anti-rotation design : low-profile, press-fit resistance to pullout.

-

Contoured talons for accurate and simplified placement.

-

Initial anchorage by means of mechanical expansion of the implant.

-

Interphalangeal gap reduction by impaction, anchorage due to press-fit fixation.

-

High mechanical resistance.

-

No freezing. The implant may be used at ambient temperature.

-

Anodized pure titanium (Nickel free) – Radiopaque.

-

Implants delivered sterile.



Lync PIP

-

Indications : proximal interphalangeal joint fusion.

-

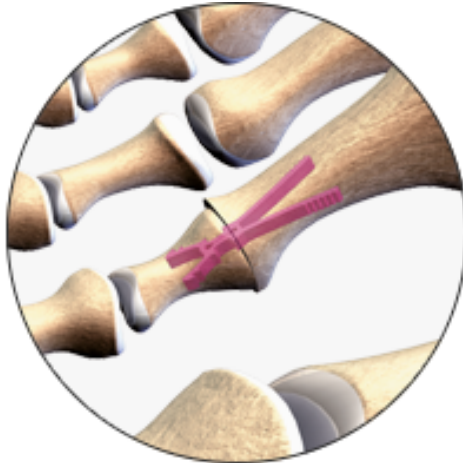
Small 0° / Small 10° / Medium 0° / Medium 10°. Covers all the lateral radii.

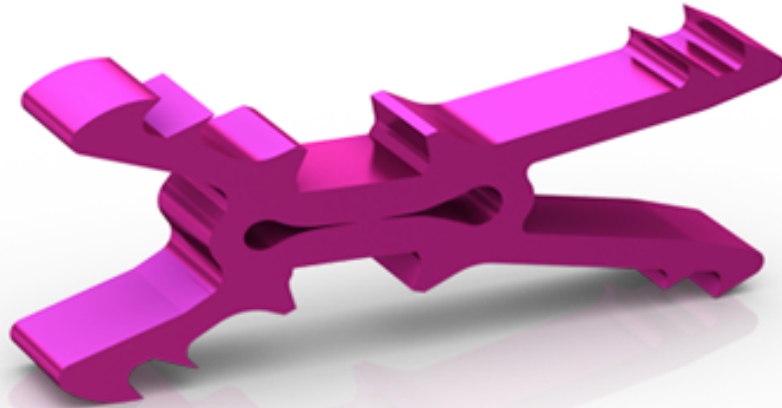
•

Long proximal legs for maximum bearing surface.

[file_download](#)

[Access our brochures](#)





Lync DIP

-

Indications : distal interphalangeal joint fusion.

-

DIP straight (0°)



Lync

Proximal interphalangeal joint fusion with Lync intramedullary implant.